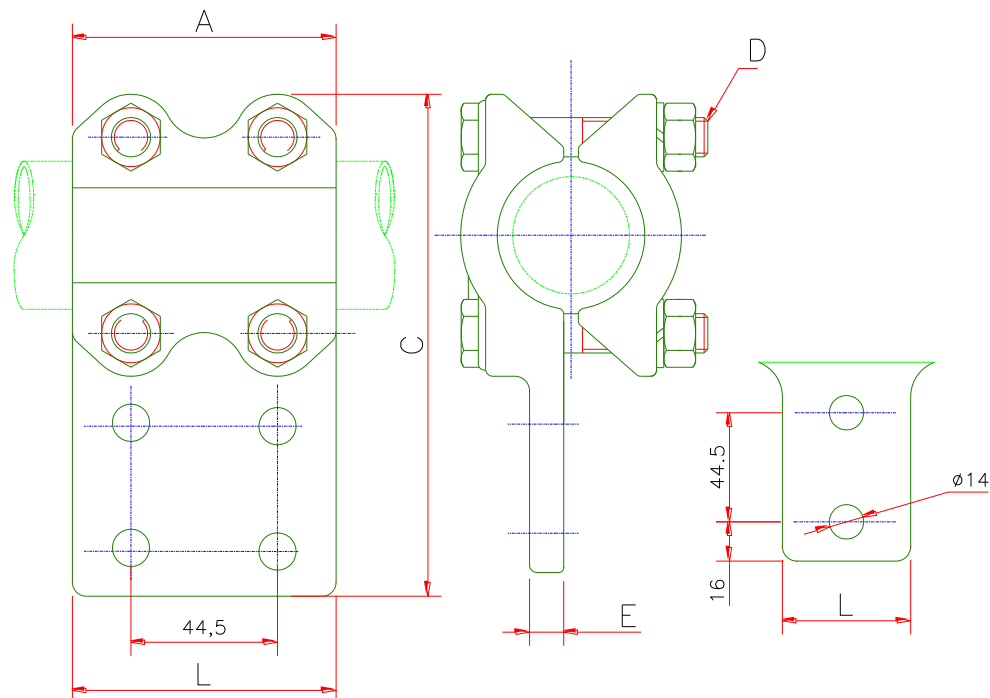


CONECTORES TERMINAIS

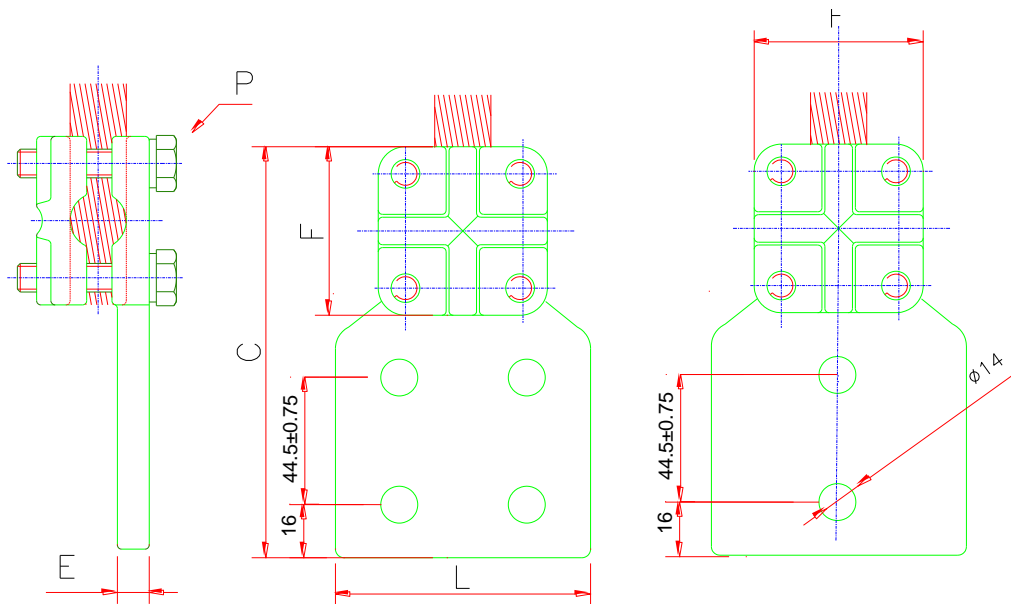


CONECTOR TERMINAL TIPO T EM BRONZE TUBO A BARRA



CODIGO	TUBO IPS		DIMENSÕES EM (MM)				
	POL	MM	A	C	L	D	E
NBU-15-2N	1/2	21,3	76	140	51	M12	10
NBU-15-4N					76		
NBU-25-2N	3/4	26,6	82	145	51		
NBU-25-4N					76		
NBU-35-2N	1	33,4	89	155	51		
NBU-35-4N					76		
NBU-45-2N	1.1/4	42,1	95	170	51		
NBU-45-4N					76		
NBU-55-2N	1.1/2	48,2	102	175	51		
NBU-55-4N					76		
NBU-65-2N	2	60,3	108	190	51		
NBU-65-4N					76		
NBU-75-2N	2.1/2	73	114	210	51		
NBU-75-4N					76		
NBU-85-2N	3	88,9	127	225	51		
NBU-85-4N					76		
NBU-95-2N	3.1/2	101,6	140	250	51		
NBU-95-4N					76		
NBU-105-2N	4	114,3	152	280	51		
NBU-105-4N					76		

CONECTOR TERMINAL RETO E 90° EM BRONZE CABO-BARRA



CÓDIGO	CONDUTORES		Nº FUROS	FIGURA	DIMENSÕES EM (MM)				
	AWG/MCM	MM2			E	F	L	P	C
TPR-95-2N	6-4/0	10-95	2	1	8	48	32	M10	130
TPR-240-2N	6-500	10-240	4	2	10	60	76		140
TPR-240-4N			2	1	11	60	42		140
TPR-300-2N	6-636	10-300	2	1	12,7	74	76	M12	154
TPR-300-4N			4	2					
TPR-500-2N	2-1000	25-500	2	1	16	86			
TPR-500-4N	4	2							
TPR-1000-2N	4/0-2000	95-1000	2	1	16	86	76	M12	166
TPR-1000-4N			4	2					

CONECTOR TERMINAL RETO LIGA DE BRONZE TUBO-BARRA

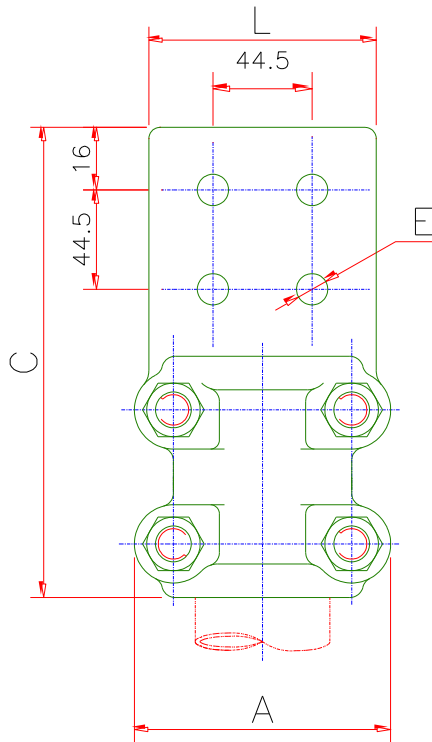


FIGURA 3

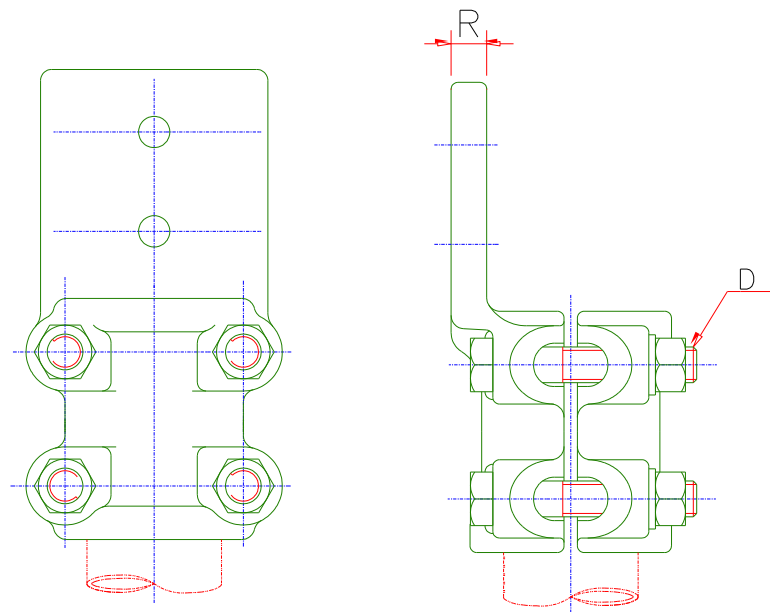
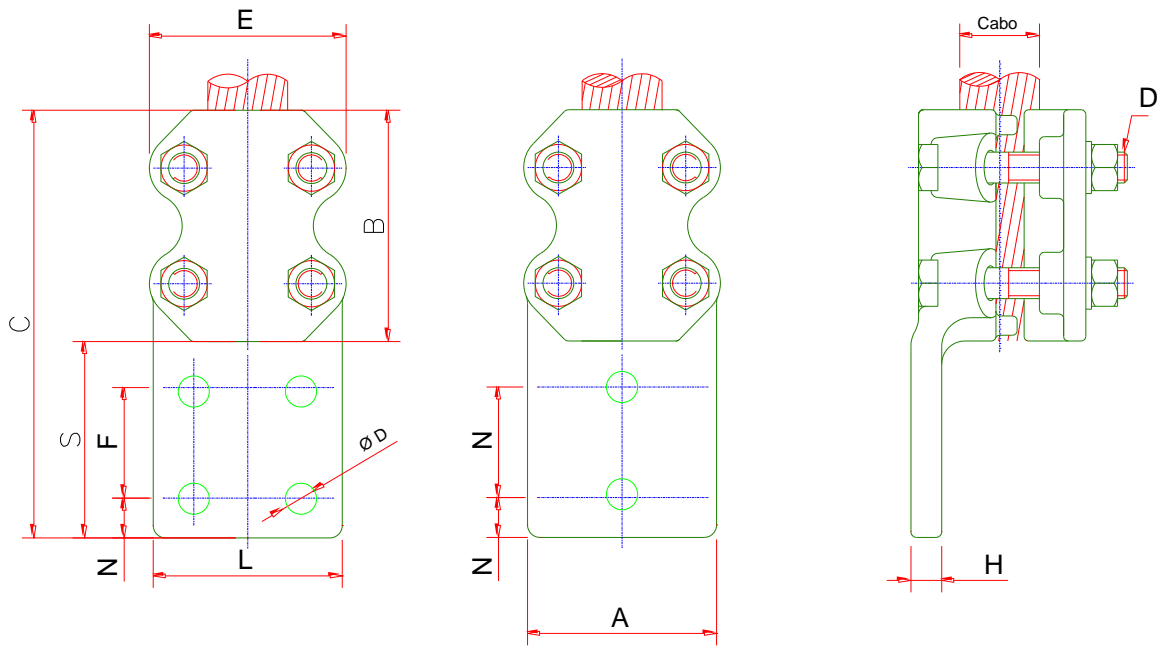


FIGURA 2

CODIGO	TUBO IPS		FUROS	FIG .	DIMENSÕES EM (MM)					
	POL.	MM			E	C	L	A	R	D
AN-25-2N	3/4	26,7	2	2	14	102	41	62	9	M10
AN-25-4N			4	3			76			
AN-35-2N	1	33,4	2	2		133	41	79	11	M12
AN-35-4N			4	3			76			
AN-45-2N	1.1/4	42,2	2	2		151	57	88	13	M16
AN-45-4N			4	3			76			
AN-55-2N	1.1/2	48,2	2	2		167	63	100	17	M16
AN-55-4N			4	3			76			
AN-65-2N	2	60,3	2	2		183	70	117	20	M16
AN-65-4N			4	3			76			
AN-75-4N	2.1/2	73	4	3		167	85	133	20	M16
AN-85-4N	3	88,9					111	157		
AN-95-4N	3.1/2	101,6					120	173		
AN-105-4N	4	114,6					133	189		

CONECTOR TERMINAL RETO BRONZE CABO-BARRA



CODIGO	CONDUTORES		Nº FUROS	FIG	DIMENSÕES EM (MM)										
	AWG-MCM	MM2			C	B	L	S	F	N	H	O	E	D	
RAN-25-2	4-1/0	25-50	2	2	110	57	29	46	25,4	10,3	8	11,1	44	M10	
RAN-25-2N					140		3								76
RAN-28-2	2/0-4/0	70-95	2	2	124	64	2	54	28,5	12,7	8	11,1	49		
RAN-28-2N					146		2								44,4
RAN-34-2	250-500	120-240	2	1	143	67	4	76	44,4	17,4	10	14,2	55,5		
RAN-34-2N					149		3								15,8
RAN-34-4N					150		6								13,4
RAN-40-2N	500-800	240-400	2	2	152	70	43	76	44,4	15,8	12	14,2	62		
RAN-40-4N															4
RAN-44-2N	750-1000	400-500	2	2	159	76	51	76	44,4	15,8	12	14,2	76		
RAN-44-4N														4	1
RAN-46-2N	1000-1500	500-800	2	2	165	82	7	76	44,4	15,8	14	14,2	82		
RAN-46-4N														4	1
RAN-48-2N	1500-2000	800-1000	2	2	171	89	6	76	44,4	15,8	17	14,2	95		
RAN-48-4N														4	1